

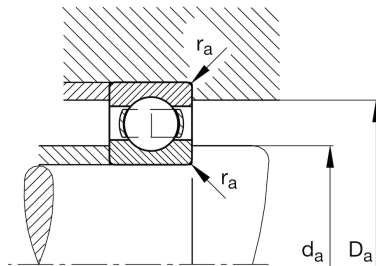
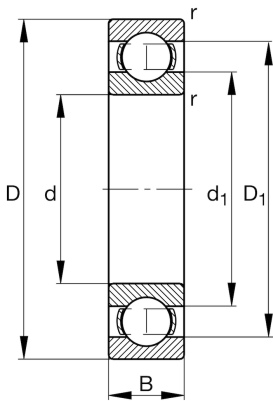
FAG

6048-M

Deep groove ball bearing

Schaeffler ID:
0167187710000Deep groove ball bearing 60..-M, single
row, solid brass cage

Technical information

**Main Dimensions & Performance Data**

d	240 mm	Bore diameter
D	360 mm	Outside diameter
B	56 mm	Width
C_r	255.000 N	Basic dynamic load rating, radial
C_{0r}	315.000 N	Basic static load rating, radial
C_{ur}	11.700 N	Fatigue load limit, radial
n_G	3.100 1/min	Limiting speed
n_{gr}	2.450 1/min	Reference speed
	20,5 kg	Weight

Dimensions

r_{min}	3 mm	Minimum chamfer dimension
D_1	321,9 mm	Shoulder diameter outer ring
d_1	278,8 mm	Shoulder diameter inner ring

Mounting dimensions

$d_{a min}$	252,4 mm	Minimum diameter shaft shoulder
$D_{a max}$	347,6 mm	Maximum diameter of housing shoulder
$r_{a max}$	2,5 mm	Maximum fillet radius

Calculation factors

f_0	15,8	Calculation factor
-------	------	--------------------

Temperature range

T_{min}	-30 °C	Operating temperature min.
T_{max}	200 °C	Operating temperature max.